



JULY 2000

1303.8

BUSINESS INDICATORS

**AUSTRALIAN
CAPITAL
TERRITORY**

EMBARGO: 11:30AM (CANBERRA TIME) FRI 28 JULY 2000

C O N T E N T S

	<i>page</i>
Notes	2
Summary of findings	3
Selected business indicators	5
FEATURE ARTICLE	
Small business	6
TABLES	
1 Business expectations: trading performance, operating income	8
2 Business indicators	9
3 ACT in relation to the rest of Australia	12
4 ACT in relation to the rest of Australia—percentage changes	13
INFORMATION	
Index of Feature Articles published in Act Business Indicators	14

- For further information about these and related statistics, contact Ria Percival-Bourne on Canberra 02 6207 0311, or the National Information Service on 1300 135 070.

NOTES

FORTHCOMING ISSUES

<i>ISSUE</i>	<i>RELEASE DATE</i>
August 2000	25 August 2000
September 2000	22 September 2000
October 2000	27 October 2000
November 2000	24 November 2000
December 2000	22 December 2000
January 2001	29 January 2001

SYMBOLS AND OTHER USAGES

ACT	Australian Capital Territory
n.a.	not available
no.	number
n.p.	not available for publication
p	preliminary
. .	not applicable
*	Represents data with a standard error of greater than 25%. Caution should be exercised when using this data.
—	nil or rounded to zero

Dalma Jacobs
Regional Director, Australian Capital Territory

SUMMARY OF FINDINGS

UPDATED SERIES

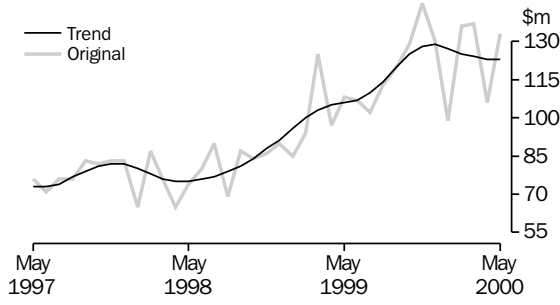
Series updated since the June 2000 issue are: business expectations, labour force, housing finance, tourist accommodation, job vacancies, industrial disputes, building approvals, new motor vehicle registrations, retail turnover, engineering construction. The feature article this month on pages 6 is Small Business in the ACT.

- Labour force At June 2000, the trend unemployment rate for the ACT rose to 5.6%, up 0.1 percentage points over May 2000 (5.5%) and a decrease of 0.2 percentage points since June 2000. The June 2000 trend estimate of unemployed persons in the ACT rose by 2.1% (to 9,800) over the previous month. Trend employment remained steady at 165,800 persons over this period but recorded a 4.3% increase over June 1999. The trend ACT participation rate decreased to 72.5%, while the national rate remained steady at 63.7%. Nationally, trend employment increased by 0.2% to 9,036,600 persons in June 2000, while the trend unemployment decreased by 0.4% (to 648,400 persons). The national trend unemployment rate continued to remain steady at 6.7%.
- Housing finance The trend number of dwelling units financed (including re-financing) in the ACT in May 2000 was 903, a decrease of 1% over the previous month. The trend estimate for the value of commitments in the ACT remained steady at \$123 million compared with the previous month. Re-financing of existing dwellings comprised 11% of the total value of dwelling units financed in May 2000, compared with 13% recorded in April 2000. Nationally, the trend number of dwelling units financed (including re-financing) during May 2000 was 9,243, compared with 9,189 in the previous month, while the trend estimate for the value of commitments decreased to \$6,007 million (down 1.7%) from previous month.
- Tourist accommodation The room occupancy rate for ACT hotels, motels and guest houses in the March quarter 2000 was 60.9% up 0.8 percentage points over the previous quarter, and up 3.3 percentage points from the March quarter 1999. Nationally, in the March quarter, the room occupancy rate increased by 0.1 percentage points to 58.2% from the corresponding quarter of the previous year.
- Job vacancies There were 3,000 job vacancies in the ACT for the May quarter 2000 which is a 23.1% decrease from the previous quarter, and an increase of 25% from the corresponding quarter of the previous year. Nationally, job vacancies for May quarter 2000 decreased by 5.2% since the February quarter, and increased 20.1% over the May quarter 1999.
- Industrial disputes In the 12 months to April 2000 in the ACT there were 29 working days lost per thousand employees in the ACT compared to 93 days nationally. In comparison, in the 12 months ended April 1999, the number of working days lost decreased by 15% for the ACT and increased by of 27% nationally.

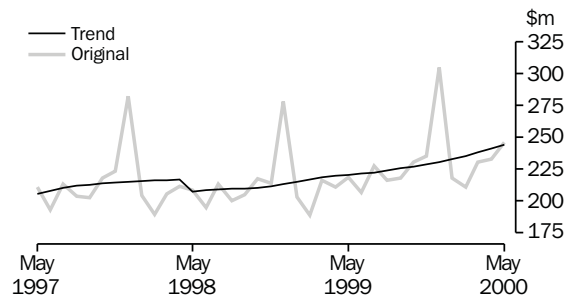
Building approvals	<p>The trend number of dwelling units approved in the ACT decreased by 9.2% to 168 dwelling units in May 2000. Nationally, the trend number of dwelling units approved decreased by 3.6% to 13,223 dwelling units in May 2000.</p> <p>The value of non-residential building approvals in the ACT in May 2000 was \$95.7 million, an increase of \$72.8 million over the previous month and an increase of \$69 million over May 1999. Nationally, the value of non-residential building approvals for May 2000 was \$1,059.7 million, an increase of 2.4% over the previous month, and an increase of 5.5% over May 1999.</p>
New motor vehicle registrations	<p>The trend estimate for ACT new motor vehicle registrations in May 2000 was 1,120, down 0.6% over the previous month, and a fall of 2.8% over May 1999. Nationally, the trend for total new motor vehicle registrations in May 2000 decreased by 1.8% to 59,905 over April 2000, and was down 7.5% over May 1999.</p>
Retail turnover	<p>The trend estimate for retail turnover in the ACT for May 2000 was \$244.5 million, an increase of 1.2% over the previous month and up 10.7% compared to May 1999. The national trend retail turnover remained steady over the previous month at \$12,173 million and was up 2.2% compared with the previous year.</p>
Engineering construction activity	<p>The value of construction work done by the public sector in the ACT during the March quarter 2000 decreased by 2% or \$0.5 million over the previous quarter, and decreased \$6 million or 20% from the March quarter 1999. Nationally, the value of public sector work done decreased 0.3% from the previous quarter, and increased 11% from the March quarter 1999.</p> <p>The value of engineering construction work done by the private sector in the ACT during the March quarter 2000 increased by \$26.9 million to \$44 million over the previous quarter and increased by \$31.4 million from the March quarter 1999. Nationally, the value of private sector engineering construction work done decreased by \$409.5 million over the previous quarter, and increased by \$60.4 million from the March quarter 1999.</p>

SELECTED BUSINESS INDICATORS

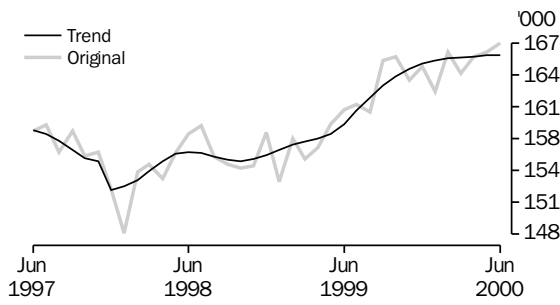
HOUSING FINANCE



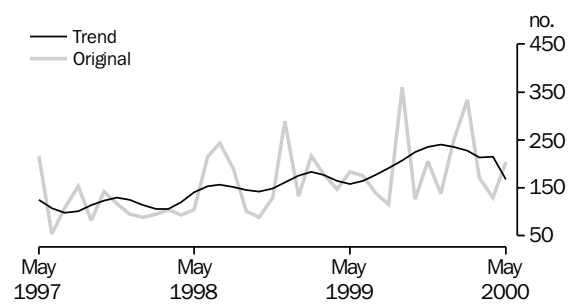
RETAIL TURNOVER



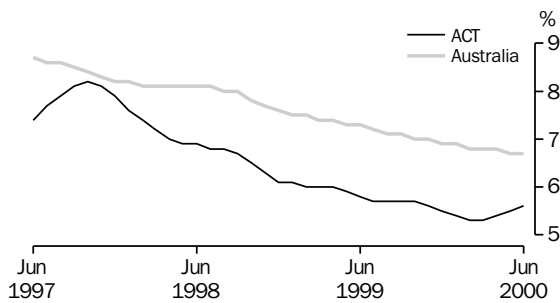
LABOUR FORCE, Employment



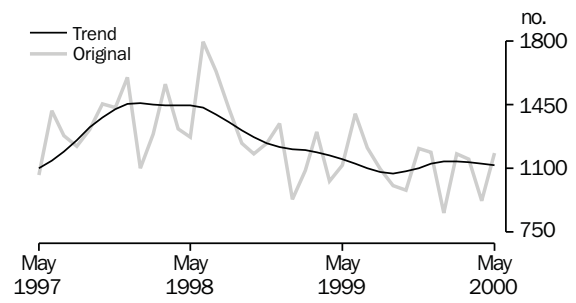
BUILDING APPROVAL, Dwelling Units Approved



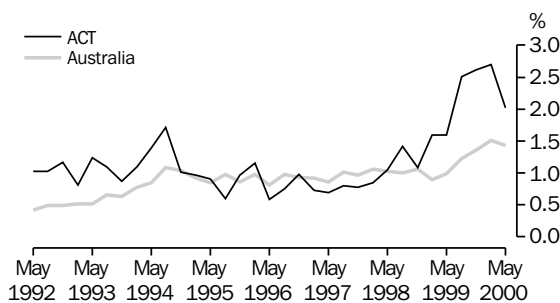
LABOUR FORCE, Unemployment Rate: Trend



NEW MOTOR VEHICLE REGISTRATIONS



JOB VACANCY RATES—1991 to 1999



FEATURE ARTICLE

SMALL BUSINESS IN THE ACT

There were 14,700 small businesses operating in the ACT during 1998–99 in which 49,300 people were employed. This represented 97% of the 15,200 private sector businesses and 54% of the estimated 91,400 private sector employment in the ACT. Of these 8,700 were employing businesses with 4,000 employers and 36,200 employees; and 6,000 non-employing businesses operated by 9,000 people working on their own account. The definitions of employing business and non-employing business can be found in *Small Business in Australia, 1999* (Cat. no. 1321.0).

The average annual rate of change over the 15 year period 1983–84 to 1998–99 for the number of small businesses in the ACT was 4.3%. This was the same average rate of change for all businesses in the ACT. Nationally, the average annual rate of change over this period was 3.7% for small businesses and 3.6% for all businesses.

The ACT average annual rate of change for the number of private sector employees over the previous 15 years was 2.9% for small businesses and 3.8% for all businesses. For Australia, these rates were 3.7% and 3.0% respectively.

NUMBER OF BUSINESSES BY INDUSTRY AND EMPLOYEE SIZE, ACT—1998–99

Industry Division	Non-employing businesses	Employee size						All businesses
		1–4	5–19	Total small business	20–99	100–199	200 or more	
Mining	—	—	—	—	—	—	—	—
Manufacturing	200	*200	*100	600	n.a.	—	—	600
Construction	1 100	*700	*100	2 000	n.a.	—	—	2 000
Wholesale and retail trade	1 000	1 000	700	2 700	*100	n.a.	—	2 800
Accommodation, cafes and restaurants	—	*100	*200	400	*100	n.a.	—	400
Transport and storage	200	*100	—	400	—	n.a.	—	400
Finance and insurance	100	200	100	400	—	—	—	400
Property and business services	1 500	*2 100	n.a.	4 200	n.a.	n.a.	n.a.	4 300
Education	300	100	n.a.	400	n.a.	—	—	400
Health and community services	500	*800	*300	1 700	*100	—	—	1 800
Cultural and recreational services	300	*200	n.a.	500	—	—	—	500
Personal and other services	600	600	*300	1 400	—	—	n.a.	1 500
Total	6 000	6 200	2 500	14 700	500	*100	—	15 200

(a) Includes non-employing businesses and any new business since September 1998. Excludes agriculture and the government sector and any businesses that have ceased since September 1998.

Source: Unpublished data, Survey of Employment and Earnings, 1998–99 and Labour Force Survey, 1998–99.

PERSONS EMPLOYED BY INDUSTRY AND EMPLOYEE SIZE, ACT—1998–99

Industry Division	Private sector employees								
	Persons working in own business		Employee size						
	Own account workers	Employers	1–4	5–19	Small business employees	20–99	100–199	200 or more	All employees
Mining	—	—	—	—	—	—	—	—	—
Manufacturing	500	200	*400	1 000	1 500	n.a.	—	200	2 300
Construction	1 900	800	*1 400	n.a.	3 100	n.a.	200	100	4 200
Wholesale and retail trade	1 500	1 200	2 600	6 700	9 400	3 500	2 800	4 700	20 400
Accommodation, cafes and restaurants	—	300	*300	*1 700	2 000	*3 000	n.a.	2 500	8 000
Transport and storage	400	200	*300	*500	700	600	n.a.	*200	2 200
Finance and insurance	100	—	*500	600	1 200	200	*600	800	2 700
Property and business services	2 000	900	*5 200	*4 700	9 900	n.a.	n.a.	*2 800	18 700
Education	400	—	*200	*300	600	*600	*600	1 700	3 400
Health and community services	700	200	*1 800	*2 300	4 100	2 400	1 500	900	8 900
Cultural and recreational services	500	—	*400	n.a.	700	*1200	200	300	2 300
Personal and other services	900	200	1 100	*2 000	3 000	*1 200	100	n.a.	5 000
Total	9 000	4 000	14 400	21 700	36 200	18 800	8 400	14 900	78 300

Source: Unpublished data, Survey of Employment and Earnings, 1998–99 and Labour Force Survey, 1998–99.

1

BUSINESS EXPECTATIONS, TRADING PERFORMANCE, OPERATING INCOME(a)

	<i>ACT</i>	<i>Aust.</i>
	%	%
Short-term		
Dec qtr 1997–Mar qtr 1998	-1.1	-0.3
Mar qtr 1998–Jun qtr 1998	-0.1	1.7
Jun qtr 1998–Sep qtr 1998	2.7	1.1
Sep qtr 1998–Dec qtr 1998	3.5	1.6
Dec qtr 1998–Mar qtr 1999	-2.7	-0.9
Mar qtr 1999–Jun qtr 1999	0.4	1.8
Jun qtr 1999–Sep qtr 1999	1.4	1.8
Sep qtr 1999–Dec qtr 1999	1.9	2.4
Dec qtr 1999–Mar qtr 2000	-5.4	-0.7
Mar qtr 2000–Jun qtr 2000	1.5	1.6
Jun qtr 2000–Sep qtr 2000	-3.6	0.8
Medium-term		
Dec qtr 1997–Dec qtr 1998	2.9	3.0
Mar qtr 1998–Mar qtr 1999	2.6	2.6
Jun qtr 1998–Jun qtr 1999	6.9	2.7
Sep qtr 1998–Sep qtr 1999	7.5	2.9
Dec qtr 1998–Dec qtr 1999	2.6	2.7
Mar qtr 1999–Mar qtr 2000	1.7	2.3
Jun qtr 1999–Jun qtr 2000	5.7	3.3
Sep qtr 1999–Sep qtr 2000	2.8	2.7
Dec qtr 1999–Dec qtr 2000	0.1	1.8
Mar qtr 2000–Mar qtr 2001	1.6	2.5
Jun qtr 2001–Jun qtr 2002	-2.6	1.5

	Unit	ACT			Aust.		
		Latest figure	% change from		Latest figure	% change from	
			Previous period	Same period previous year		Previous period	Same period previous year
POPULATION, VITAL AND LABOUR							
POPULATION, Dec qtr 99	'000	311.2	0.1	0.9	19 080.8	0.3	1.2
Natural increase	no.	660	1.9	-12.2	31 774	21.4	1.2
Net migration	no.	-231	278.7	-67.2	27 582	-3.1	0.6
Total increase	no.	429	-26.9	793.8	59 356	8.6	0.9
LABOUR FORCE, Jun 00							
Original series							
Employed	'000	167.0	0.5	4.1	9 055.9	0.4	3.0
Unemployed	'000	9.0	-8.2	8.4	608.6	-5.3	-6.2
Unemployment rate	%	5.1	-0.5	0.2	6.3	-0.4	-0.6
Participation rate	%	72.6	-0.2	1.4	63.6	—	0.6
Long-term unemployed, May 00	no.	2 077	6.5	-29.7	182 456	-2.8	-14.1
Long-term unemployed as percentage of total unemployed		21.2	-0.2	-7.7	28.4	-0.1	-2.4
Trend series							
Employed	'000	165.8	—	4.3	9 036.6	0.2	3.1
Unemployed	'000	9.8	2.1	—	648.4	-0.4	-5.4
Unemployment rate	%	5.6	0.1	-0.2	6.7	—	-0.6
Participation rate	%	72.5	-0.1	1.2	63.7	—	0.6
WAGE AND SALARY EARNERS							
Number employed—Trend series, Nov qtr 99							
Public sector	'000	69.0	2.1	3.6	1 450.6	0.0	0.6
Private sector	'000	79.2	-2.9	6.3	5 710.8	-0.7	1.1
Total	'000	148.2	-0.7	5.0	7 161.4	-0.6	1.0
Gross earnings—Original series, Dec qtr 99							
Public sector	\$m	816.7	-10.4	3.8	15 280.6	-2.8	1.6
Private sector	\$m	562.4	-6.7	-4.2	48 726.8	1.9	3.9
Total	\$m	1 379.0	-8.9	0.4	64 007.9	0.8	3.3
JOB VACANCIES, May qtr 00	'000	3.0	-23.1	25.0	106.8	-5.2	20.1
INDUSTRIAL DISPUTES IN PROGRESS, Apr 00							
Working days lost	'000	0.0	-100.0	—	40.9	-27.5	45.0
Days lost per '000 employees (year ended Jan 00)	no.	29.0	-3.3	-14.7	93.0	1.1	27.4
BUILDING AND CONSTRUCTION							
HOUSING FINANCE, May 00							
Secured commitments to individuals for							
Original series							
Construction of dwellings	\$m	18.0	28.6	50.0	828.0	24.5	-5.5
Purchase of new dwellings	\$m	4.0	33.3	33.3	247.0	33.5	5.1
Purchase of established dwellings	\$m	95.0	26.7	21.8	5 713.0	29.8	17.9
Re-financing	\$m	15.0	7.1	-6.3	1 246.0	41.1	42.7
Total housing commitments	\$m	133.0	25.5	23.1	6 788.0	29.3	14.0
Seasonally adjusted series							
Total housing commitments	\$m	125.0	1.6	12.6	6 174.0	4.9	6.0
Trend series							
Dwelling units financed	no.	903	-1.0	8.8	43 206	-1.5	-1.3
Total housing commitments	\$m	123.0	—	16.0	6 007.0	-1.7	5.1
BUILDING APPROVALS, May 00							
Original series							
Dwelling units	no.	203	56.2	10.9	14 208	19.7	2.5
Value of new residential	\$m	28.8	64.6	15.2	1 836.8	26.7	12.0
Value of residential alterations and additions	\$m	5.0	8.7	-29.6	343.1	25.0	35.8
Value of non-residential	\$m	95.7	317.9	258.4	1 059.7	2.4	5.5
Value of total building	\$m	129.5	187.1	120.2	3 239.7	17.4	11.8
Trend series							
Dwelling units	no.	168	-9.2	7.7	13 223	-3.6	-1.7

	Unit	ACT			Aust.		
		Latest figure	% change from		Latest figure	% change from	
			Previous period	Same period previous year		Previous period	Same period previous year
BUILDING AND CONSTRUCTION <i>continued</i>							
BUILDING COMMENCEMENTS, Dec qtr 99							
New houses	no.	392	50.2	43.6	28 906	1.5	14.7
Value of houses commenced	\$m	52.7	36.9	50.6	3 751.8	3.5	24.4
Value of non-residential building commenced	\$m	34.2	4.0	4.9	2 816.2	-5.2	-11.6
Value of total commencements	\$m	144.3	14.7	44.4	8 741.3	-6.6	8.5
PRICE INDEXES							
Established house price index, Mar qtr 00		140.0	2.9	8.9	143.9	1.8	9.6
ENGINEERING CONSTRUCTION (Mar qtr 00)							
Private sector							
Value of work commenced	\$m	47.0	331.2	-0.8	3 026.9	19.1	9.9
Value of work done	\$m	44.0	157.3	249.2	2 564.4	-13.8	-2.3
Value of work yet to be done	\$m	23.3	17.7	-46.2	5 384.8	10.4	-1.7
Value of work done by public sector	\$m	23.4	-2.1	-20.4	1 854.9	-0.3	11.4
PRICES, WAGES AND CONSUMER SPENDING							
CONSUMER PRICE INDEX, Mar qtr 00							
Food(a)		130.6	-0.2	1.2	129.1	0.2	1.3
Housing(a)		99.0	1.9	5.0	100.7	1.1	4.7
Transportation(a)		135.3	3.0	7.0	130.1	2.9	7.3
All groups(a)		124.9	1.0	2.9	125.2	0.9	2.8
AVERAGE WEEKLY EARNINGS, Feb 00							
Original series							
Males	\$	962.0	0.9	8.9	824.5	1.7	4.5
Females	\$	809.6	-2.2	4.0	691.4	1.2	3.5
Persons	\$	894.4	-0.4	6.4	775.0	1.5	4.1
Trend series							
Males	\$	966.1	3.0	9.1	820.7	1.3	3.7
Females	\$	817.7	1.3	5.6	689.6	1.0	3.5
Persons	\$	901.9	2.2	7.4	772.0	1.2	3.6
WAGE COST INDEX, Mar qtr 00							
Public sector(b)		106.3	0.5	1.8	108.5	0.6	2.5
Private sector(b)		107.2	0.9	3.4	107.5	0.7	2.9
Total(b)		106.6	0.6	2.4	107.7	0.7	2.8
RETAIL TURNOVER, May 00							
Original series							
Food retailing	\$m	89.6	4.9	12.0	4 763.6	-0.3	1.6
Department stores	\$m	27.0	4.7	14.4	1 052.5	2.7	4.1
Hospitality and services	\$m	35.9	-1.4	2.9	1 997.2	-0.4	-0.4
All other retailing	\$m	93.5	9.7	16.6	4 147.4	9.6	7.8
Total	\$m	246.0	5.7	12.5	11 960.7	3.2	3.5
Trend series							
Food retailing	\$m	88.5	1.3	10.8	4 860.6	-0.1	0.8
Department stores	\$m	26.2	0.8	10.1	1 082.9	0.4	4.1
Hospitality and services	\$m	35.2	0.6	2.9	2 071.9	-0.6	1.3
All other retailing	\$m	94.6	1.6	14.1	4 157.5	0.4	3.8
Total	\$m	244.5	1.2	10.7	12 172.9	0.0	2.2

(a) Base year: 1989-90 = 100.0.

(b) Base of each index: September quarter 1997 = 100.0.

	Unit	ACT			Aust.		
		% change from			% change from		
		Latest figure	Previous period	Same period previous year	Latest figure	Previous period	Same period previous year
TOURISM AND TRANSPORT							
HOTELS, MOTELS AND GUEST HOUSE ACCOMMODATION, Mar qtr 00							
Original series							
Room nights	'000	271.3	4.3	12.5	10 088.0	-3.1	5.2
Takings at current prices	\$m	25.8	-8.5	5.7	1 112.4	3.2	6.6
Guest arrivals	'000	199.9	-0.8	11.1	7 931.0	-4.6	4.4
Guest nights	'000	443.7	4.5	10.3	18 037.0	-2.5	5.4
Room occupancy rate	%	60.9	0.8	3.3	58.2	-1.5	0.1
NEW MOTOR VEHICLE REGISTRATIONS, May 00							
Motor vehicles	no.	1 185	28.7	5.8	64 154	27.5	0.4
Seasonally adjusted motor vehicles	no.	1 142	1.1	-2.6	59 005	-1.2	-6.7
Trend motor vehicles	no.	1 120	-0.6	-2.8	59 905	-1.8	-7.5
STATE ACCOUNTS							
STATE ACCOUNTS, Dec qtr 99(a)							
Trend series (chain volume measure) (b)							
Household final consumption expenditure	\$m	1 629	0.7	3.0	89 911	1.1	4.3
General government final consumption expenditure	\$m	2 833	2.6	9.9	27 739	1.2	5.7
Private gross fixed capital formation	\$m	361	5.9	22.4	29 145	-0.6	2.0
Public gross fixed capital formation	\$m	110	-1.8	-7.6	7 670	4.9	19.0
State final demand	\$m	4 923	1.9	7.6	153 452	1.0	4.2
GROSS STATE PRODUCT (trend, chain volume measures) 1998-99	\$m	11 822	2.6	n.a.	591 546	4.5	—
PRIVATE NEW CAPITAL EXPENDITURE, Dec qtr 99							
Original series (at current prices)							
Buildings and structures	\$m	23	35.3	-20.7	2 989	-4.7	-27.1
Equipment, plant and machinery	\$m	71	26.8	-15.5	7 962	5.9	1.5
Total	\$m	94	30.6	-16.8	10 950	2.7	-8.4
Trend series (at current prices)							
Buildings and structures	\$m	20	5.3	-16.7	2 809	-4.3	-24.0
Equipment, plant and machinery	\$m	68	19.3	-5.6	7 546	-0.7	-4.0
Total	\$m	88	15.8	-8.3	10 355	-1.7	-10.4

(a) Quarterly state final demand details are released as a special data service (Product no. 5206.0.40.001).

(b) Reference year for chain volume measures is 1996-97.

Source: ABS publications: Australia Demographic Statistics (Cat. no. 3101.0), Australian National Accounts: State Accounts (Cat. no. 5242.0), Building Activity, Australia (Cat. no. 8752.0), Building Approvals, Australia (Cat. no. 8731.0), Consumer Price Index (Cat. no. 6401.0), Housing Finance for Owner Occupation, Australia (Cat. no. 5609.0), House Price Indexes: Eight Capital Cities (Cat. no. 6416.0), Industrial Disputes, Australia (Cat. no. 6321.0), Job Vacancies and Overtime, Australia (Cat. no. 6354.0), Labour Force, Australia, Preliminary (Cat. no. 6202.0), Labour Force, Australia (Cat. no. 6203.0), New Motor Vehicle Registration, Australia (Cat. no. 9301.0), Price Index of Materials Used in Housing Building (Cat. no. 6408.0), Private New Capital Expenditure, State Estimates (Cat. no. 5646.0), Retail Trade, Australia (Cat. no. 8501.0), Tourism Indicators, Australia (Cat. no. 8634.0), Tourism Accommodation, ACT (Cat. no. 8635.8).

	Unit	Latest period	NSW	Vic.	Qld	SA	WA	Tas.	NT	ACT	Aust.
POPULATION	'000	Dec qtr 99	6 451.7	4 741.5	3 539.5	1 495.8	1 873.8	469.9	194.3	311.2	19 080.8
LABOUR FORCE (trend)											
Employed persons	'000	June 00	3 050.2	2 251.1	1 682.4	672.7	924.7	198.8	90.7	165.8	9 036.6
Unemployment rate	%	June 00	5.7	6.7	7.8	8.4	6.3	9.4	5.4	5.6	6.7
WAGE AND SALARY EARNERS (trend)											
Public sector	'000	Nov qtr 99	465.1	300.2	291.9	112.7	148.9	40.8	21.8	69.0	1 450.6
Private sector	'000	Nov qtr 99	1 931.0	1 517.8	1 011.4	416.0	584.7	118.5	52.1	79.2	5 710.8
Total public and private sector (trend)	'000	Nov qtr 99	2 396.2	1 818.0	1 303.3	528.7	733.5	159.3	73.9	148.2	7 161.4
STATE ACCOUNTS(a)											
Gross state product (chain volume measures)	\$m	1998-99	209 937	151 213	96 000	40 493	63 198	11 059	6 460	11 822	89 911
PRIVATE NEW CAPITAL EXPENDITURE (trend)											
Total	\$m	Dec qtr 99	3 426	2 782	1 762	542	1 436	109	261	88	10 355
BUILDING APPROVALS											
Dwelling units approved(original)	no.	May 00	4 370	3 536	3 177	764	1 810	238	110	203	14 208
Dwelling units approved (trend)	no.	May 00	3 835	3 830	2 764	794	1 516	185	92	168	13 223
Value of non-residential building approved (original)	\$m	May 00	298.3	238.5	173.2	66.1	165.3	17.1	5.5	95.7	1 059.7
Value of all buildings approved (original)	\$m	May 00	1 056.4	808.2	584.0	156.8	430.5	51.6	22.7	129.5	3 239.7
ENGINEERING CONSTRUCTION											
Value of engineering construction work done	\$m	Mar qtr 00	1 408.7	771.4	1 117.4	316.5	610.2	67.0	60.7	67.4	4 419.3
AVERAGE WEEKLY EARNINGS (trend)											
Full-time adult ordinary time	\$	Feb qtr 00	810.9	758.5	716.0	717.8	785.6	719.3	782.2	901.9	772.0
RETAIL TRADE (trend)											
Retail turnover	\$m	May 00	4 190.7	2 897.5	2 275.5	896.4	1 271.8	267.7	133.7	244.5	12 172.9
HOTELS, MOTELS & GUEST HOUSE ACCOMMODATION											
Room nights occupied	'000	Mar qtr 00	3 388.1	1 773.4	2 570.2	550.7	932.3	334.9	267.2	271.3	10 088.0
Room occupancy rate	%	Mar qtr 00	60.3	62.3	54.7	58.0	54.5	66.2	47.7	60.9	58.2
NEW MOTOR VEHICLE REGISTRATIONS (trend)	no.	May 00	20 679	15 687	11 630	3 596	5 428	1 169	596	1 120	59 905
	Unit	Latest period	Syd.	Melb.	Bris.	Adel.	Perth	Hob.	Dar.	Canb.	Aust.
CONSUMER PRICE INDEX											
Food(d)		Mar qtr 00	129.6	128.3	127.9	131.2	130.4	127.8	127.4	130.6	129.1
Housing(d)		Mar qtr 00	108.6	91.7	105.1	97.9	95.1	98.8	117.5	99.0	100.7
Transportation(d)		Mar qtr 00	131.1	129.2	128.5	130.4	130.4	126.6	126.2	135.3	130.1
All Groups(d)		Mar qtr 00	125.8	124.7	125.5	126.8	123.1	125.3	124.4	124.9	125.2
AVERAGE RETAIL PRICES (cents)											
Milk, carton, supermarket sales	1 litre	Mar qtr 00	131	146	135	142	146	134	144	120	n.a.
Bread, white loaf, sliced, supermarket sales	680 g	Mar qtr 00	234	241	212	215	224	243	225	232	n.a.
Beef, rump steak	1 kg	Mar qtr 00	1 293	1 114	1 131	1 238	1 206	1 051	1 190	1 275	n.a.
Chicken, frozen	1 kg	Mar qtr 00	370	349	318	377	353	371	391	364	n.a.
Potatoes	1 kg	Mar qtr 00	112	140	101	73	150	109	132	132	n.a.
Coffee, instant (jar)	150 g	Mar qtr 00	614	622	614	555	644	661	612	636	n.a.
Scotch nip, public bar	30 ml	Mar qtr 00	340	334	281	369	393	266	333	280	n.a.
Private motoring petrol											
Leaded	1 litre	Mar qtr 00	85.4	82.4	75.0	83.6	85.1	90.1	92.2	88.9	n.a.
Unleaded	1 litre	Mar qtr 00	82.6	79.9	72.3	81.0	82.5	88.1	89.8	86.2	n.a.

(a) State estimates are not comparable to national estimates from the June quarter 1995 due to revised methodology used in *Australian National Accounts, State Accounts* (Cat. no. 5242.0).

(b) Experimental series. Users are cautioned these estimates are derived indirectly by calculating a deflator from the expenditure components of the state series concerned. Therefore, in general, the sum of the state estimates does not equal the estimates for Australia.

(c) Reference year for chain volume measures is 1996-97.

(d) Base year: 1989-90 = 100.0.

<i>Indicator</i>	<i>Latest period</i>	<i>NSW</i>	<i>Vic.</i>	<i>Qld</i>	<i>SA</i>	<i>WA</i>	<i>Tas.</i>	<i>NT</i>	<i>ACT</i>	<i>Aust.</i>
POPULATION	Dec qtr 99	0.4	0.3	0.4	0.1	0.3	—	0.5	0.1	0.3
LABOUR FORCE (trend)										
Employed persons	June 00	0.3	0.2	0.2	-0.2	-0.1	0.1	-0.2	—	0.2
Unemployment rate	June 00	-0.1	-0.1	-0.1	0.1	-0.1	0.1	0.2	0.1	—
WAGE AND SALARY EARNERS (trend)										
Pubic sector	Nov qtr 99	-0.4	—	0.9	-0.9	-0.5	—	-0.5	2.1	—
Private sector	Nov qtr 99	-2.5	0.9	-1.7	1.4	2.3	-2.8	-0.2	-2.9	-0.7
Total public and private sector	Nov qtr 99	-2.1	0.8	-1.1	0.9	1.7	-2.1	-0.3	-0.7	-0.6
STATE ACCOUNTS(a)										
Gross state product (chain volume measures)(b)(c)	1998-99	4.1	6.2	4.5	2.1	2.1	2.5	7.6	2.6	1.1
PRIVATE NEW CAPITAL EXPENDITURE (trend)										
Total (at current prices)	Dec qtr 99	-2.0	-1.8	0.3	-3.7	-3.3	-1.8	6.5	15.8	-1.7
BUILDING APPROVALS										
Dwelling units approved (original)	May 00	30.0	-3.3	27.8	18.8	31.6	73.7	32.5	56.2	19.7
Dwelling units approved (trend)	May 00	-2.2	-5.1	-1.6	-6.6	-7.3	2.8	-12.4	-9.2	-3.6
Value of non-residential building approved (original)	May 00	-21.6	-27.1	25.1	12.6	88.9	113.8	-52.6	317.9	2.4
Value of all buildings approved (original)	May 00	17.1	-7.8	22.9	15.9	57.2	100.0	-12.4	187.1	17.4
ENGINEERING CONSTRUCTION										
Value of engineering construction work done	Mar qtr 00	-6.4	-0.6	-19.4	8.9	-13.9	27.1	-19.3	64.4	-8.6
AVERAGE WEEKLY EARNINGS (trend)										
Full-time adult ordinary time	Feb qtr 00	1.1	1.0	0.9	1.2	1.4	0.8	0.7	2.2	1.2
RETAIL TRADE (trend)										
Retail turnover	May 00	0.2	-0.3	—	0.2	0.4	-0.3	0.3	1.2	—
HOTELS, MOTELS & GUEST HOUSE ACCOMMODATION										
Room nights occupied	Mar qtr 00	-1.0	6.0	-10.8	-2.0	-5.3	17.8	-22.5	4.3	-3.1
Room occupancy rate	Mar qtr 00	-0.6	4.2	-6.0	-0.4	-3.1	10.2	-12.5	0.8	-1.5
NEW MOTOR VEHICLE REGISTRATIONS (trend)	May 00	-2.2	-3.0	0.5	-1.9	-1.8	-2.3	-1.7	-0.6	-1.8
	<i>Latest period</i>	<i>Syd.</i>	<i>Melb.</i>	<i>Bris.</i>	<i>Adel.</i>	<i>Perth</i>	<i>Hob.</i>	<i>Dar.</i>	<i>Canb.</i>	<i>Aust.</i>
CONSUMER PRICE INDEX										
Food(d)	Mar qtr 00	—	-0.2	1.2	0.6	0.9	0.2	1.2	-0.2	0.2
Housing(d)	Mar qtr 00	1.2	1.4	1.2	1.0	—	1.4	-0.3	1.9	1.1
Transportation(d)	Mar qtr 00	3.0	3.2	3.0	2.4	2.7	2.3	2.4	3.0	2.9
All Groups(d)	Mar qtr 00	0.9	1.0	1.1	0.9	0.3	1.0	0.6	1.0	0.9
AVERAGE RETAIL PRICES (cents)										
Milk, carton, supermarket sales	Mar qtr 00	1.6	2.8	3.8	0.7	—	3.1	1.4	0.8	n.a.
Bread, white loaf, sliced, supermarket sales	Mar qtr 00	0.9	0.8	-0.5	-1.8	1.8	1.7	2.7	0.9	n.a.
Beef, rump steak	Mar qtr 00	3.5	2.5	4.1	8.6	1.3	2.6	0.1	2.3	n.a.
Chicken, frozen	Mar qtr 00	1.9	-4.9	-2.8	0.5	—	—	-5.6	1.1	n.a.
Potatoes	Mar qtr 00	-11.8	-17.6	-15.1	-30.5	-1.3	17.2	-3.6	-6.4	n.a.
Coffee, instant (jar)	Mar qtr 00	5.5	3.2	1.7	-2.3	—	-4.6	-3.2	11.6	n.a.
Scotch nip, public bar	Mar qtr 00	0.9	1.8	1.4	0.3	—	0.8	0.3	1.8	n.a.
Private motoring petrol										
Leaded	Mar qtr 00	7.3	8.1	7.3	6.6	7.7	6.4	6.6	7.0	n.a.
Unleaded	Mar qtr 00	7.4	8.3	7.4	6.9	8.0	6.5	6.3	7.1	n.a.

(a) State estimates are not comparable to national estimates from the June quarter 1995 due to revised methodology used in Australian National Accounts, State Accounts (Cat. no. 5242.0).

(b) Experimental series. Users are cautioned these estimates are derived indirectly by calculating a deflator from the expenditure components of the state series concerned. Therefore, in general, the sum of the state estimates does not equal the estimates for Australia.

(c) Reference year for chain volume measures is 1996-97.

(d) Base year: 1989-90 = 100.0.

INDEX OF FEATURE ARTICLES PUBLISHED IN ACT BUSINESS INDICATORS

<i>Issue</i>	<i>Title</i>	<i>Page reference</i>
Jul 2000	Small Business in the ACT	6
Jun 2000	Sports Attendance	7
	Attendance at Selected Cultural Venues	8
May 2000	Employee Earnings, Benefits and Trade Union Membership	7–8
Apr 2000	Emergency Services and Public Transport Usage in the ACT	8–12
Mar 2000	Forms of Employment	6–8
Feb 2000	Job Search Experience of Unemployed Persons	6–7
Jan 2000	Transition from Education to Work, May 1999	6–7
Dec 1999	Structure of the ACT Economy	6
	Participation in Sport and Physical Activities	7
Nov 1999	Crime and Safety in the ACT	6–8
Oct 1999	Labour Force Experience in the ACT	6–8
Sep 1999	Career Experience in the ACT	7–8
	Carers in the ACT	9
Aug 1999	Stock of Human Resources in Science and Technology	6–8
Jul 1999	Persons with a Disability in the ACT	6–9
Jun 1999	Participation in Education in the ACT	6–8
May 1999	Transition from Education to Work of Persons Aged 15–64 in the ACT	7–8
Apr 1999	Persons Not in the Labour Force in the ACT	6–8
Mar 1999	Education and Labour Force Status of the ACT's Young People	6–8
Feb 1999	Income and Living Standards in the ACT	6–9
Jan 1999	Education and Training Experience of ACT Residents	6–9
Dec 1998	Families and Labour Force Status in the ACT	6–9
Nov 1998	Retrenchment and Redundancy in the ACT	6–8
	Retail Turnover in the ACT	9
Oct 1998	Research and Experimental Development in the ACT	6–9

<i>Issue</i>	<i>Title</i>	<i>Page reference</i>
Sep 1998	Labour Force Mobility in the ACT	6-7
	Income Distribution in the ACT	8-9
Aug 1998	ACT Investors in Rental Dwellings	6-8
Jul 1998	Retirement and Retirement Intentions	6-9
Jun 1998	Profile of Small Business in the ACT	7-9
May 1998	Participation in Education in the ACT	7-8
Apr 1998	Retail Turnover in the ACT by Type of Retailing and Shopping Centre	7
	Shopping Preferences in the ACT	7-9
Mar 1998	Characteristics of Small Business	8-9
Feb 1998	Weekly Earnings of Employees in the ACT	8-9
Jan 1998	Transition from Education to Work of Working Age persons in the ACT	7-8
	Job Search Experience of Unemployed Persons in the ACT	9

FOR MORE INFORMATION...

- INTERNET* **www.abs.gov.au** the ABS web site is the best place to start for access to summary data from our latest publications, information about the ABS, advice about upcoming releases, our catalogue, and Australia Now—a statistical profile.
- LIBRARY* A range of ABS publications is available from public and tertiary libraries Australia-wide. Contact your nearest library to determine whether it has the ABS statistics you require, or visit our web site for a list of libraries.
- CPI INFOLINE* For current and historical Consumer Price Index data, call 1902 981 074 (call cost 77c per minute).
- DIAL-A-STATISTIC* For the latest figures for National Accounts, Balance of Payments, Labour Force, Average Weekly Earnings, Estimated Resident Population and the Consumer Price Index call 1900 986 400 (call cost 77c per minute).

INFORMATION SERVICE

Data which have been published and can be provided within five minutes are free of charge. Our information consultants can also help you to access the full range of ABS information—ABS user-pays services can be tailored to your needs, time frame and budget. Publications may be purchased. Specialists are on hand to help you with analytical or methodological advice.

- PHONE* **1300 135 070**
- EMAIL* **client.services@abs.gov.au**
- FAX* 1300 135 211
- POST* Client Services, ABS, GPO Box 796, Sydney 1041

WHY NOT SUBSCRIBE?

ABS subscription services provide regular, convenient and prompt deliveries of ABS publications and products as they are released. Email delivery of monthly and quarterly publications is available.

- PHONE* 1300 366 323
- EMAIL* subscriptions@abs.gov.au
- FAX* 03 9615 7848
- POST* Subscription Services, ABS, GPO Box 2796Y, Melbourne 3001



2130380007004
ISSN 1320-808X

RRP \$17.00